

HISTORIC VIRGINIA HALL

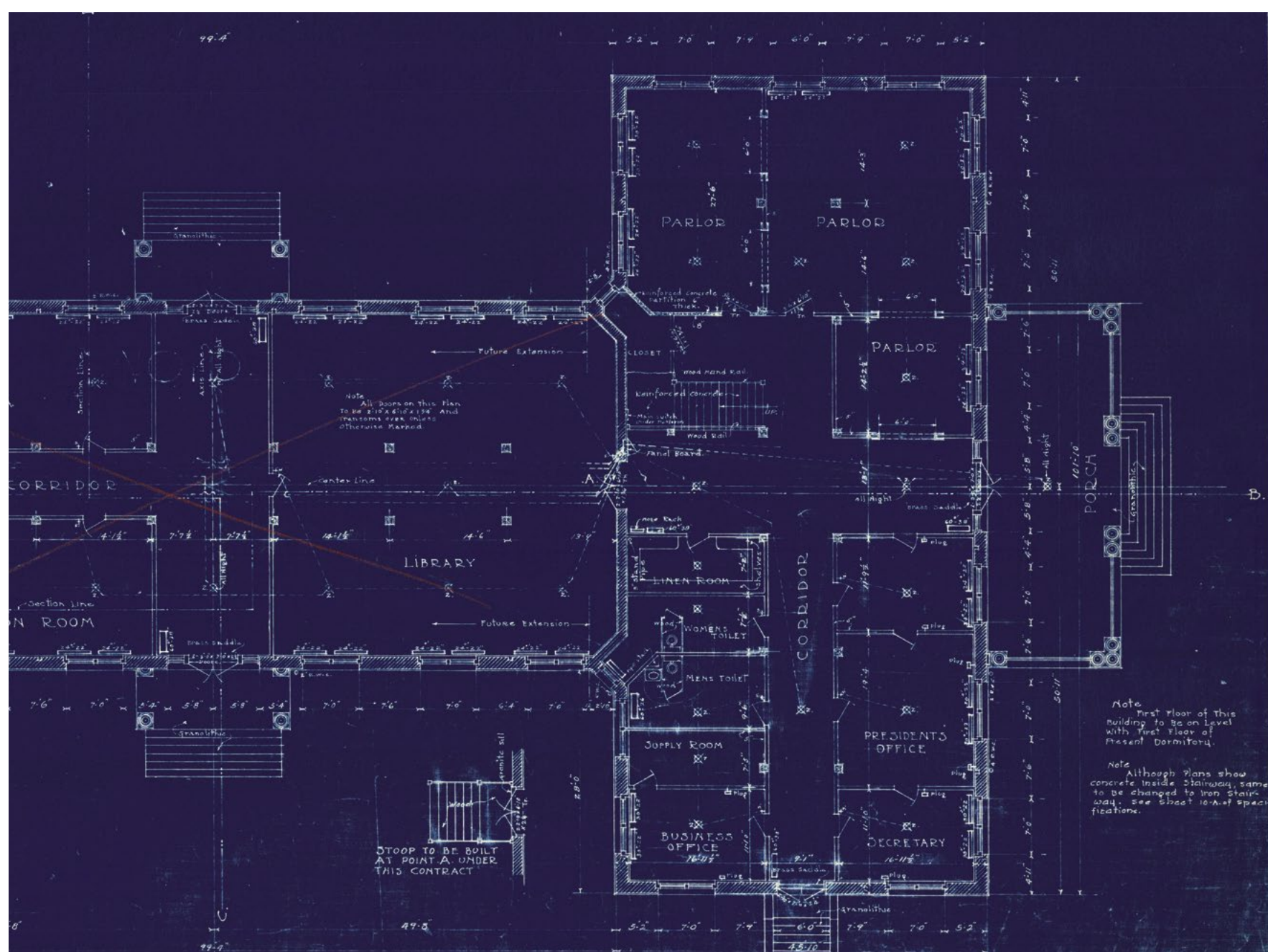
DESIGN ♦ CONSTRUCTION ♦ RENOVATION

President's Office

In 1914, the newly constructed Virginia Hall included a suite of offices in the northeast corner of the building overlooking the lawn. With space for the President, the business office, and a secretary, this was the center of administration for the State Normal and Industrial School for Women, as UMW was then known. The President's Office remained in this space until 1938 when it moved temporarily to Monroe Hall, as the construction of George Washington Hall was completed. The set of uncovered stairs, or stoop, on the east elevation served as a private entrance for the President. Removed in later renovations, this historic entrance was reconstructed in 2021.

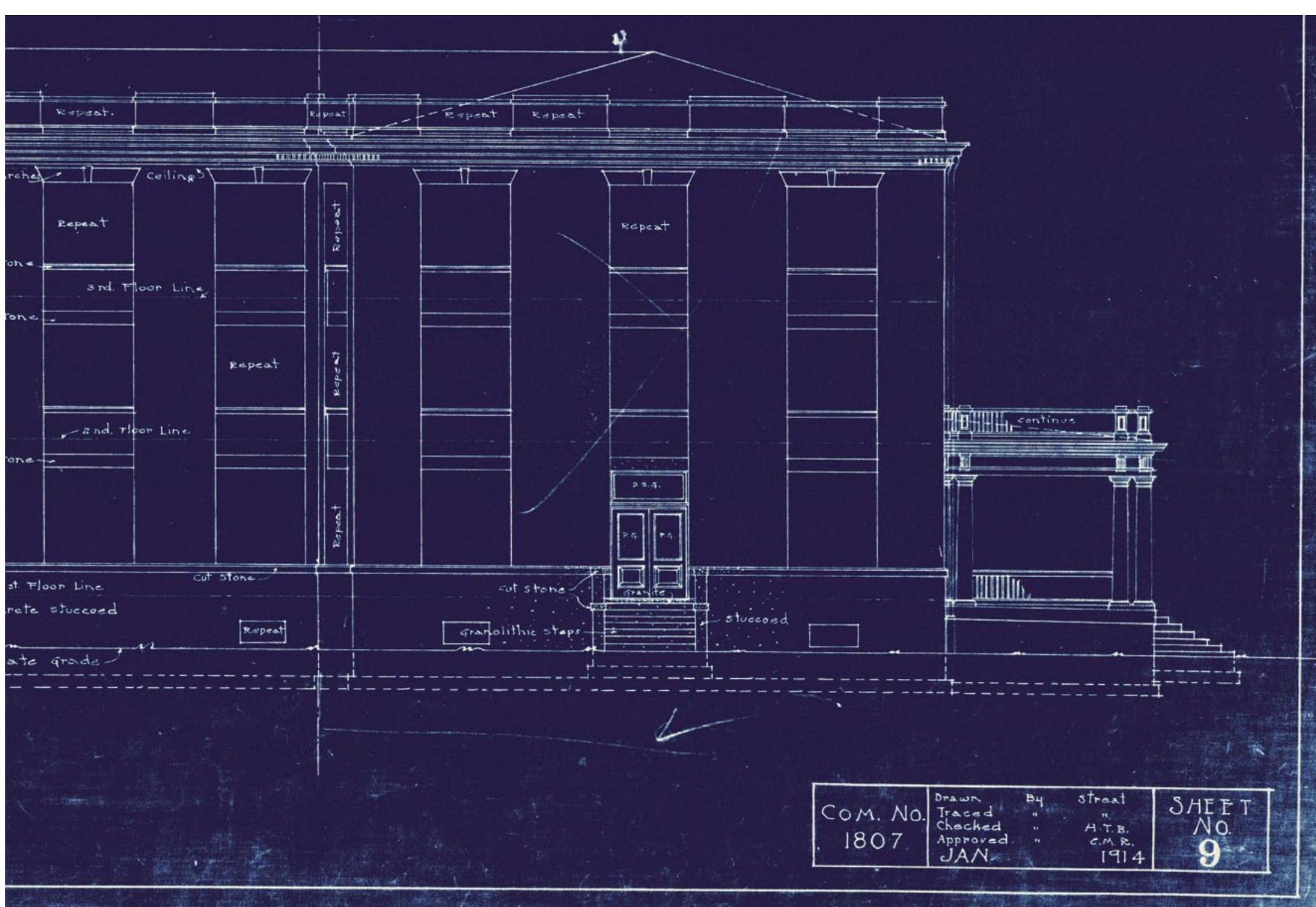
North wing of Virginia Hall in 1918, note stoop on east elevation for access to President's Office. Image from Bulletin, October 1923 Vol IX, No. 3 (12 annual) page 13.

Image: UMW Special Collections



Detail of 1914 plan of Virginia Hall with President's Office in northeast corner of building.

Image: UMW Special Collections



Detail of 1914 elevation of Virginia Hall showing east elevation entrance for President's Office.

Image: UMW Special Collections



VIRGINIA HALL



Scan for accessible PDF

